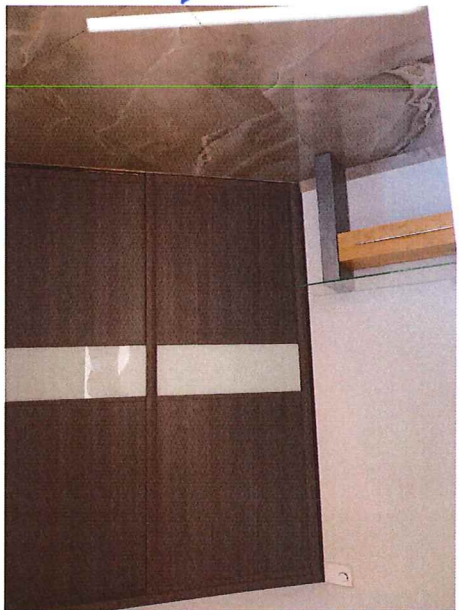
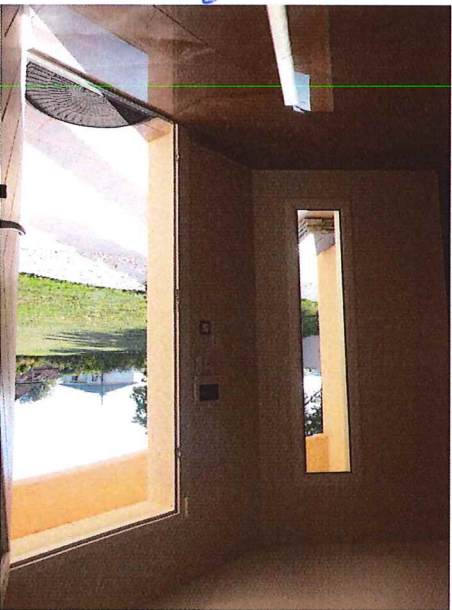
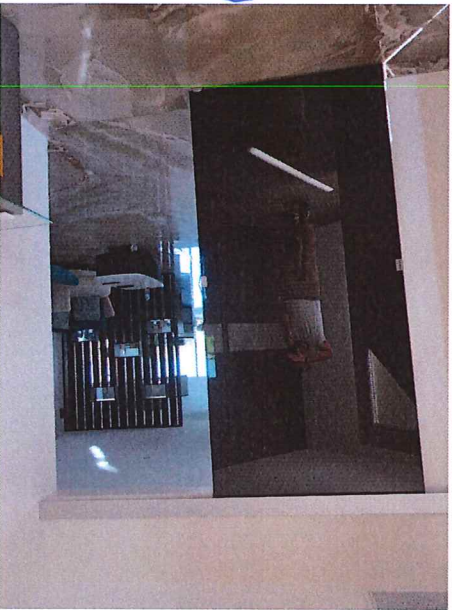
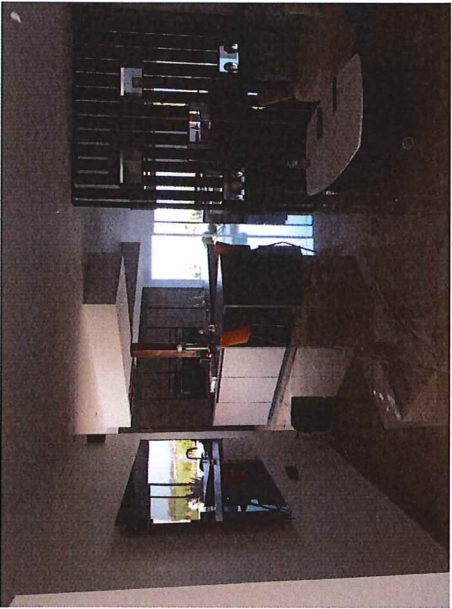
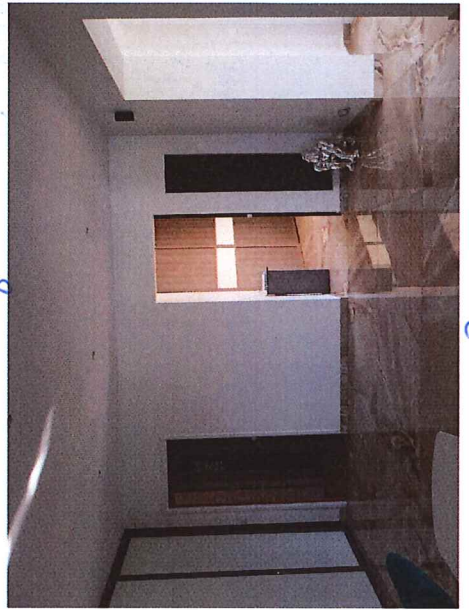
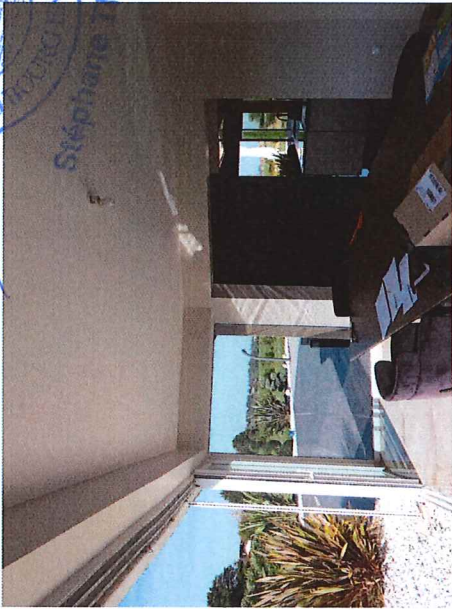
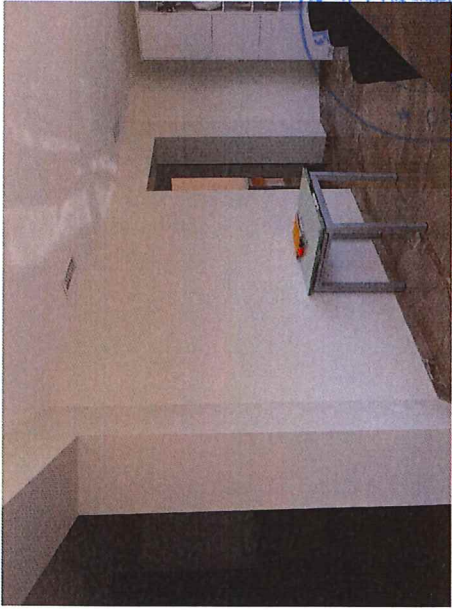


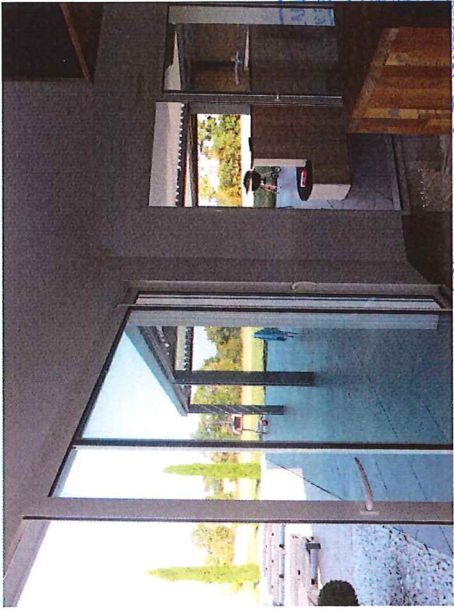
LES ABRÉS
de Justice
1000
BRESSE
Stéphane HESE



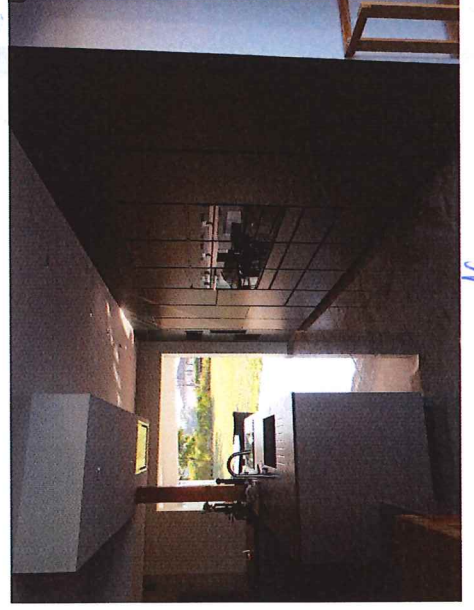


Stéphane THESE

At



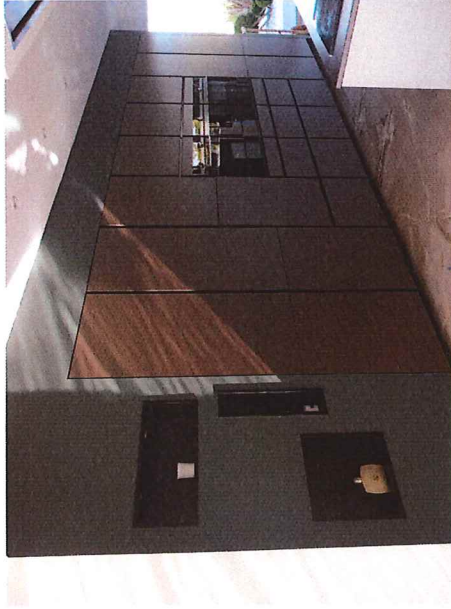
sk



16



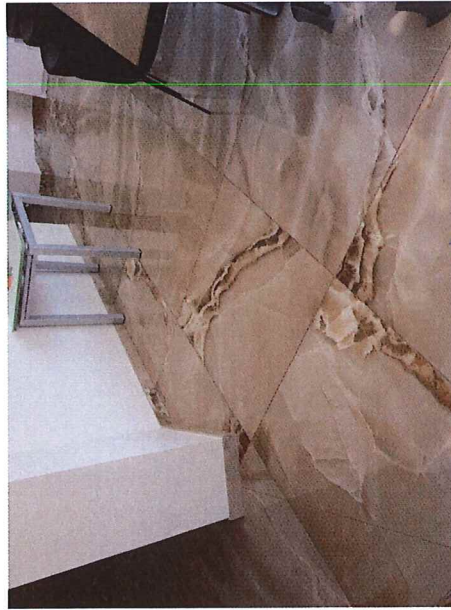
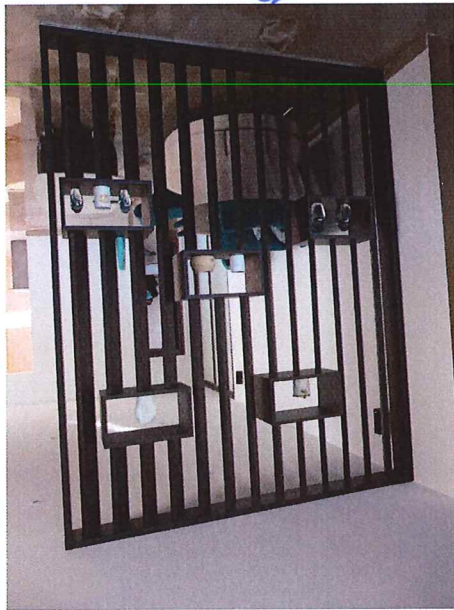
17



14



15

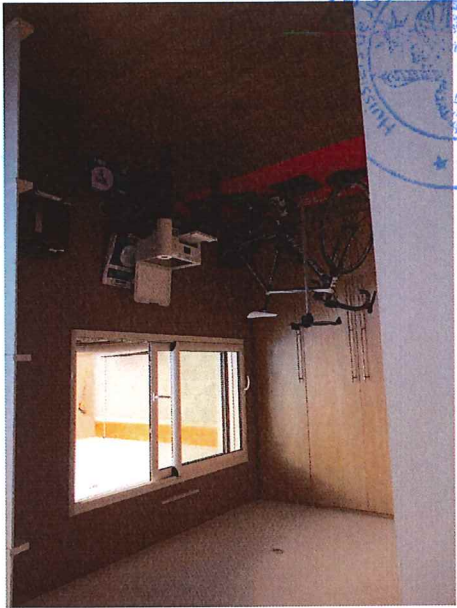


18



19

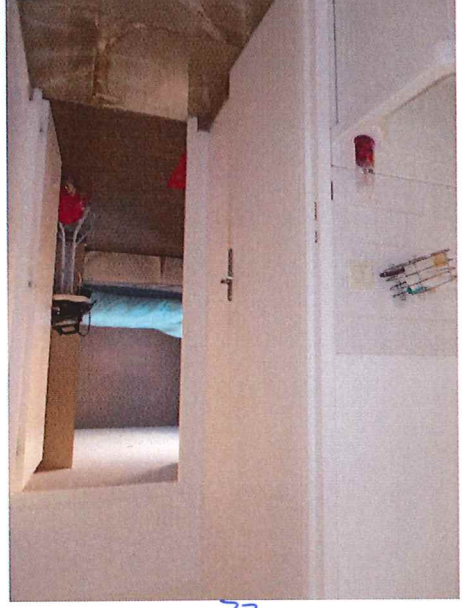
27



28

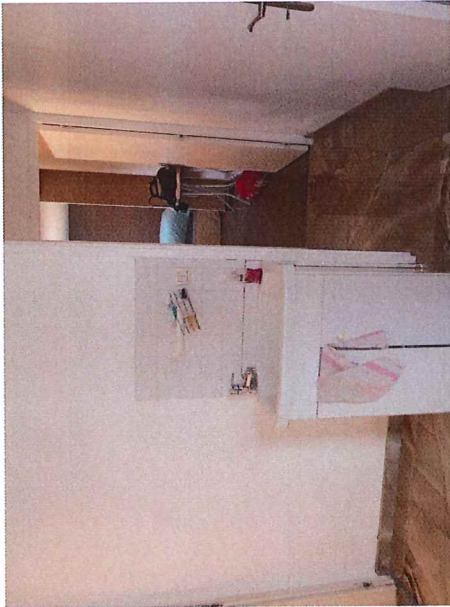
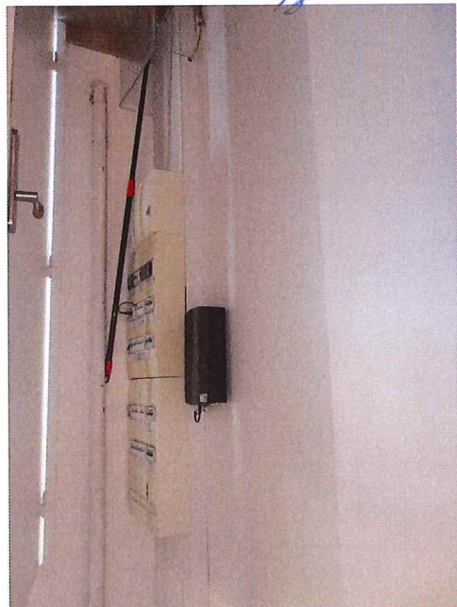


29



30

31

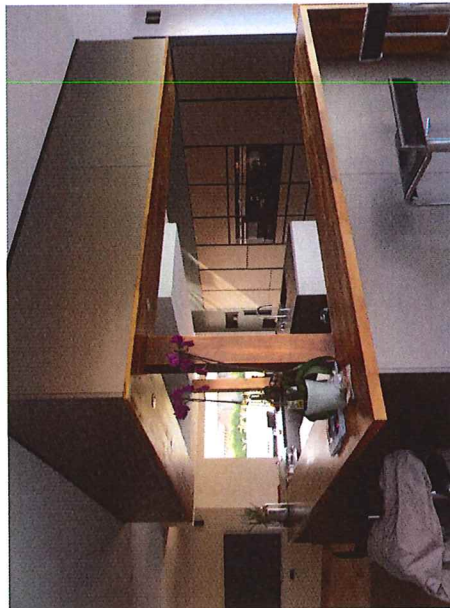
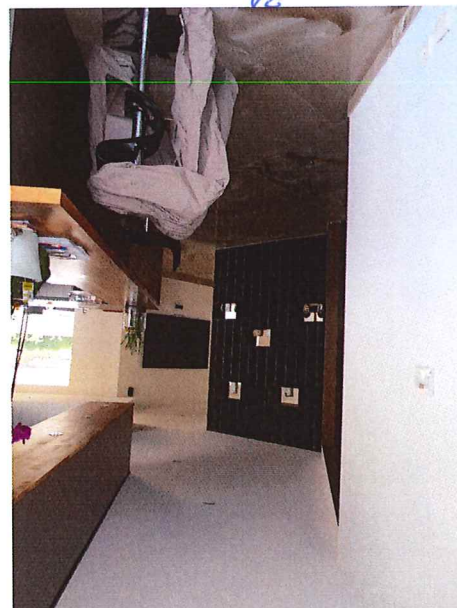


32

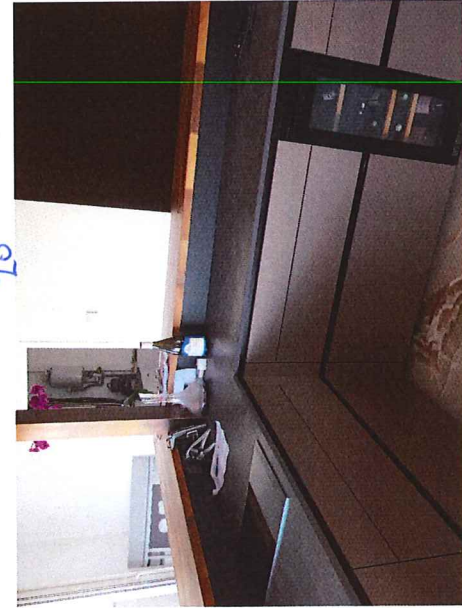


33

34



35

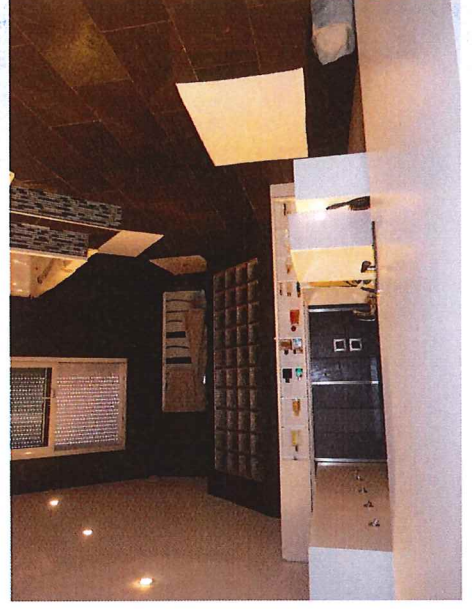
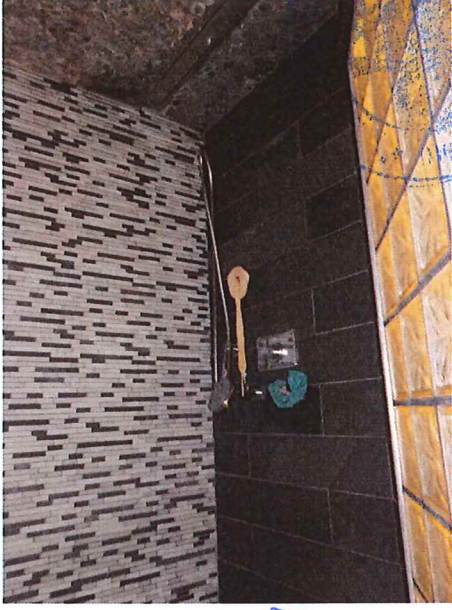


36

36

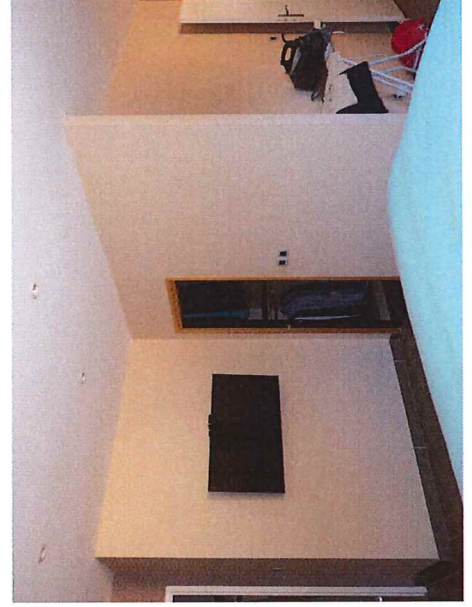
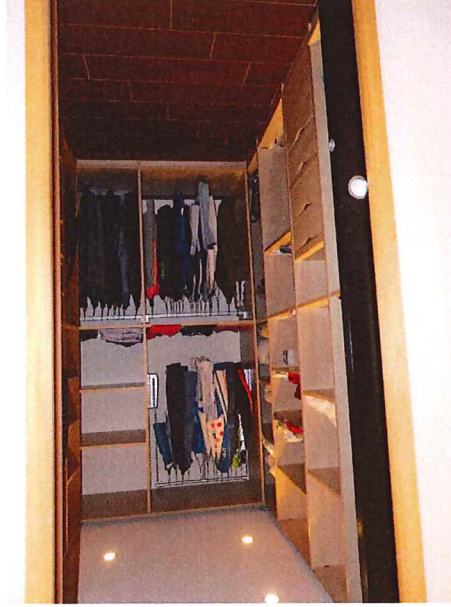
35

34



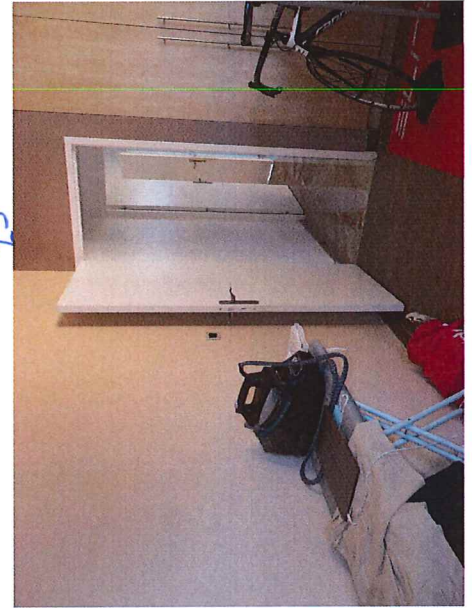
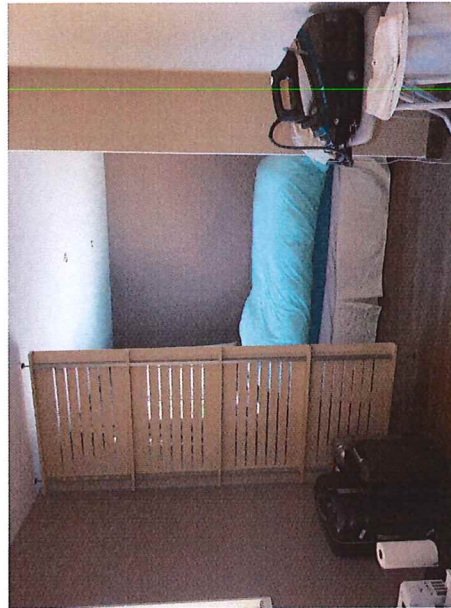
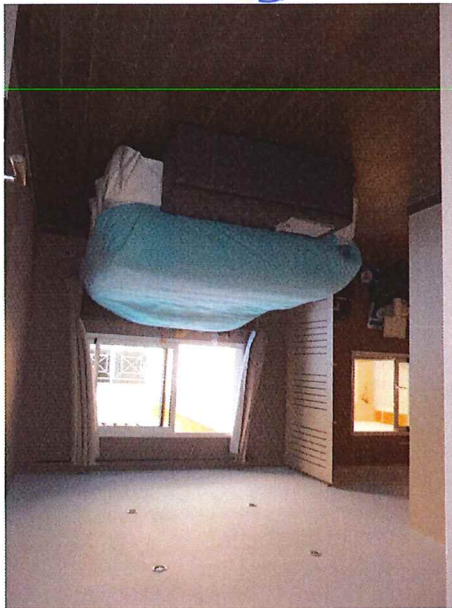
33

38



30

36

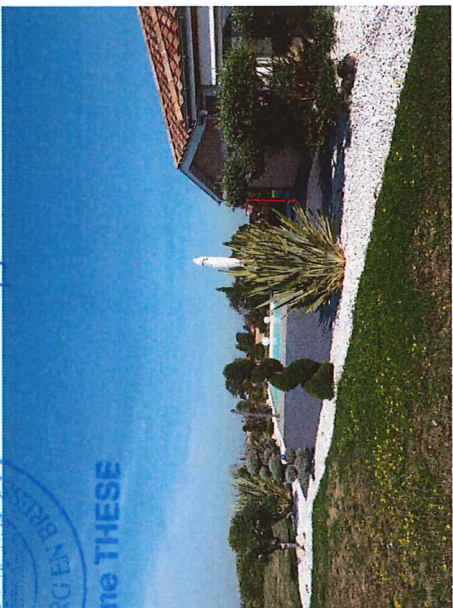


32

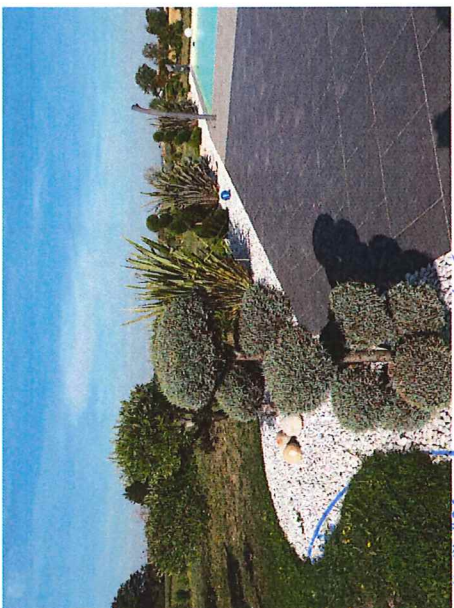
37



58



57



55



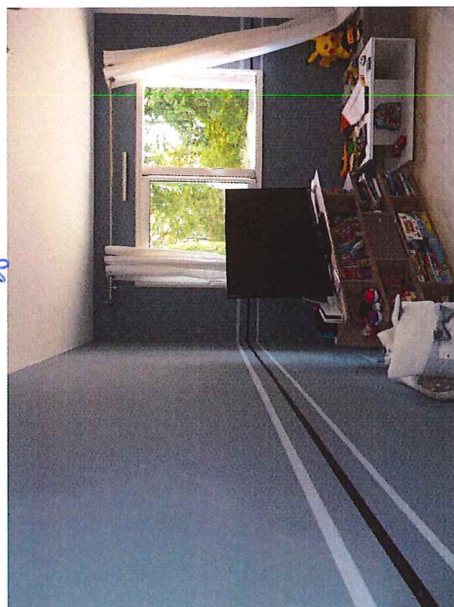
54



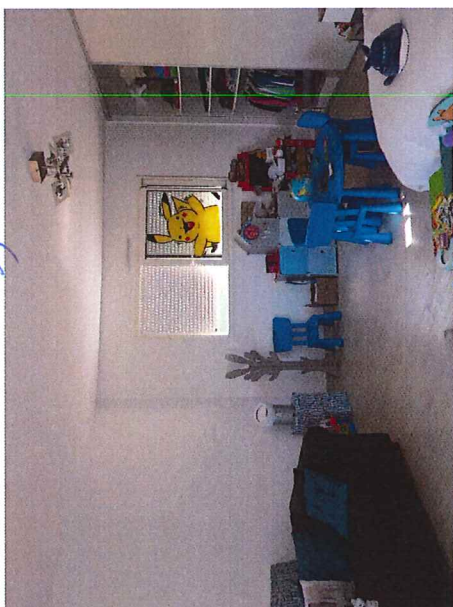
56



59



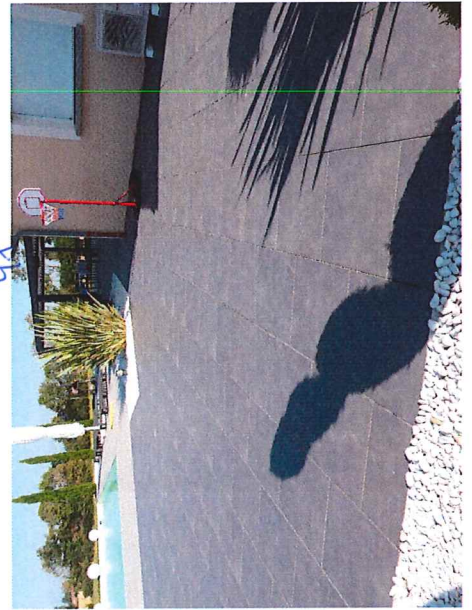
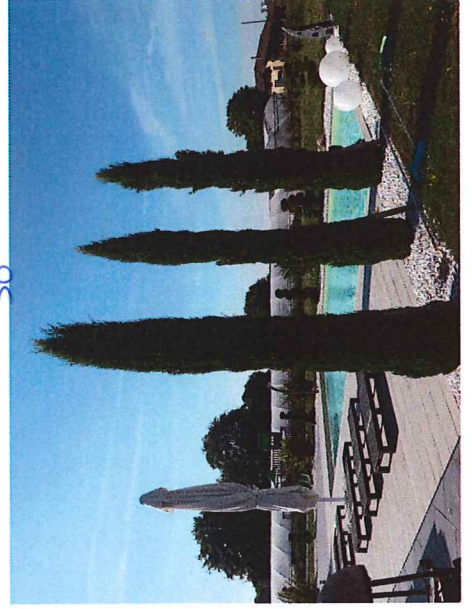
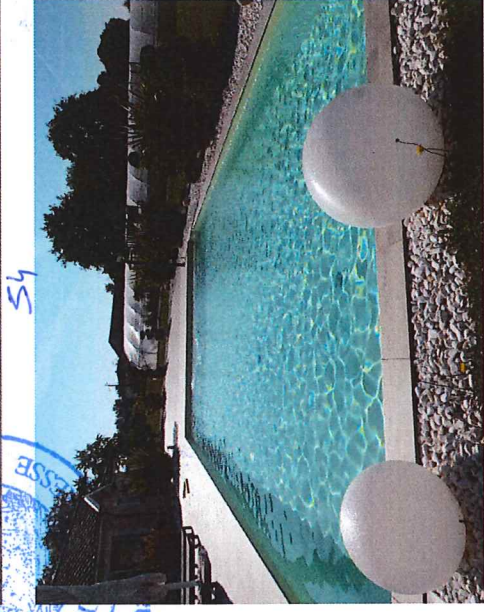
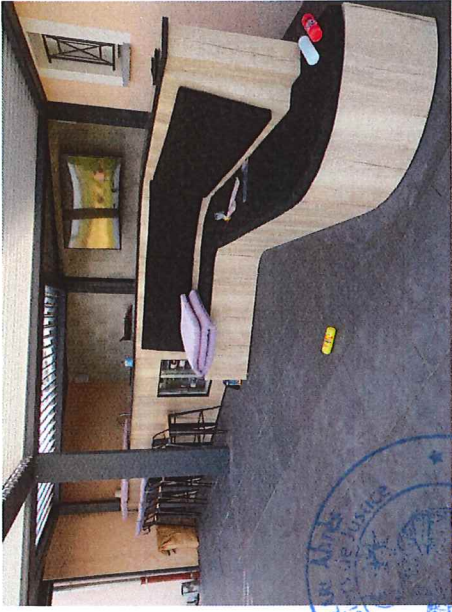
53



52



51



SEKOLAH AL-IBRAHIM
KEMENTERIAN AGAMA
REPUBLIK INDONESIA
KEMENTERIAN KEMAHANAGARAAN
KEMENTERIAN KEMASYARAKATAN

54

53

52

55

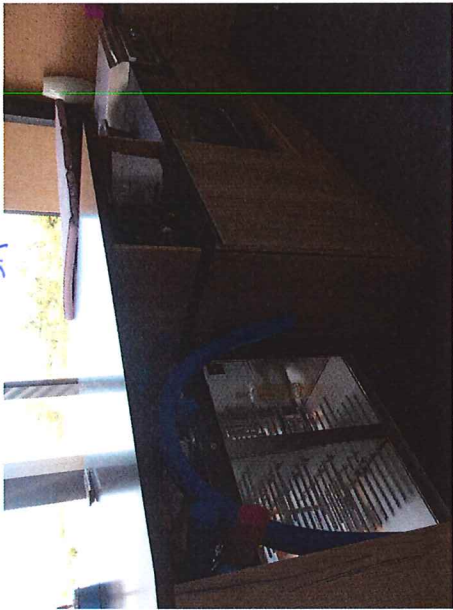
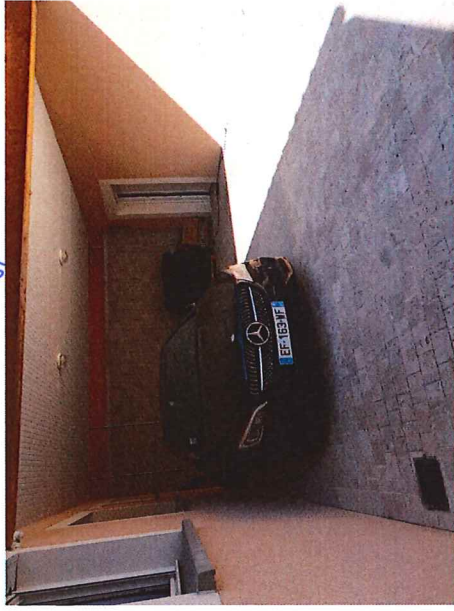
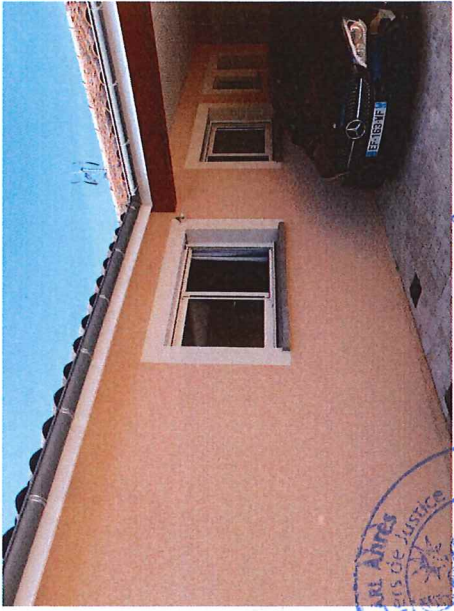
50

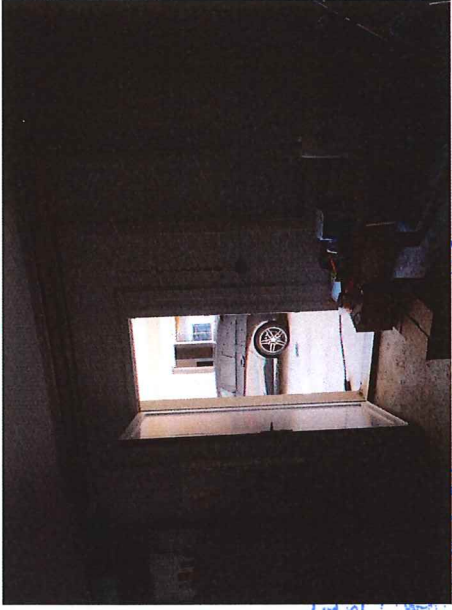
69

58

57

46



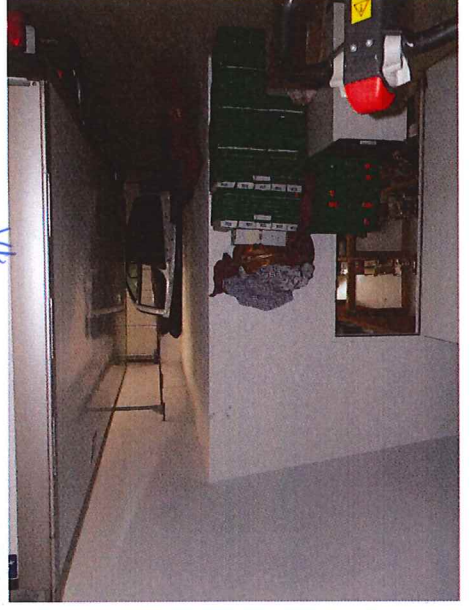


87



Stéphane THESE
BOURBON EN D

89



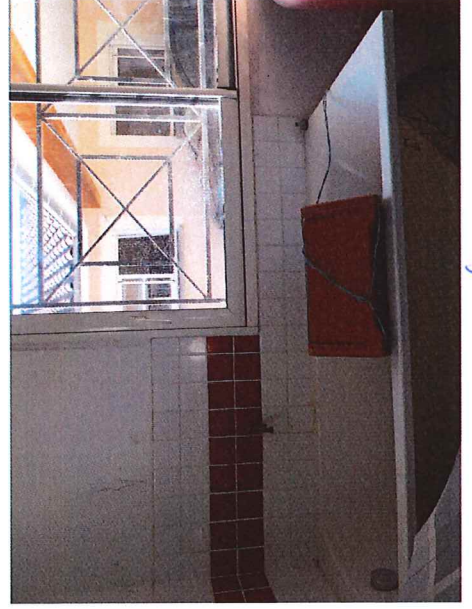
88

87

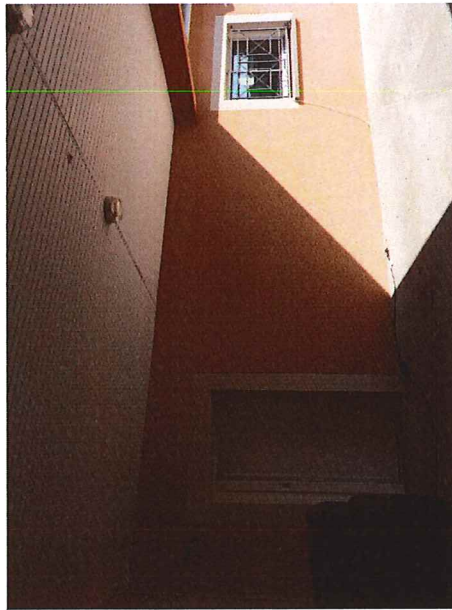


86

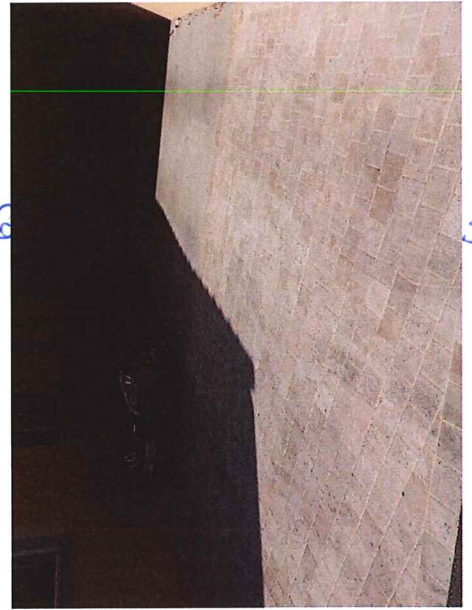
86



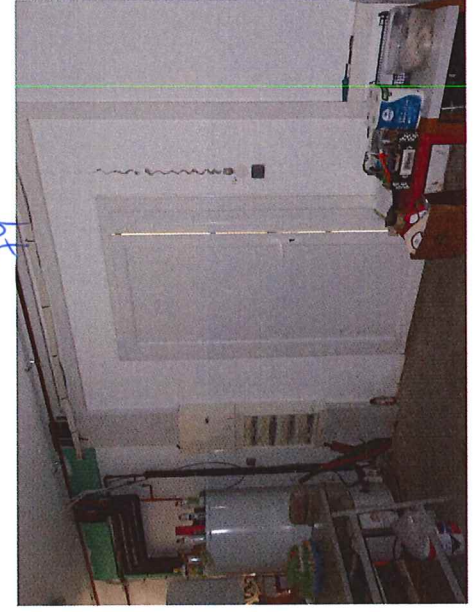
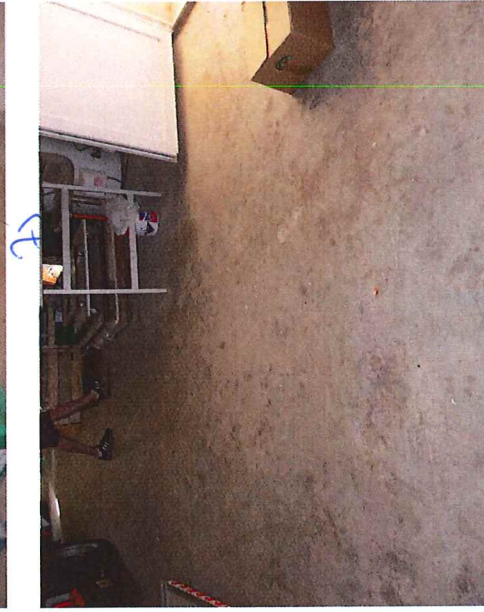
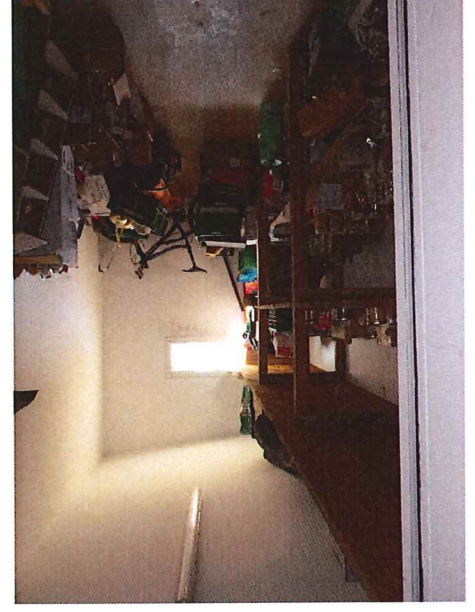
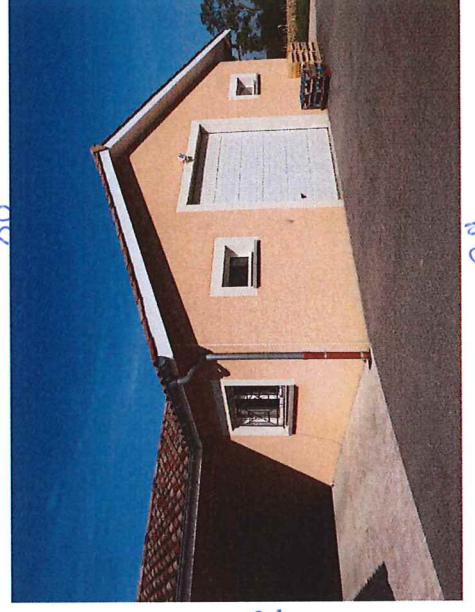
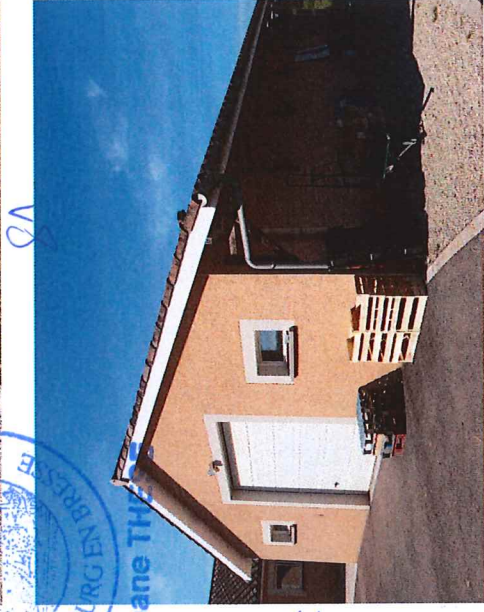
87



86



87



STÉPHANE THIBAUD
INGÉNIEUR EN ARCHITECTURE
10000
10000

78

79

80

81

82

83

84

85

86



88



LE JOURNAL
DE LA PRESSE
de la Nouvelle-Calédonie

88



88



88



88



88



88



88



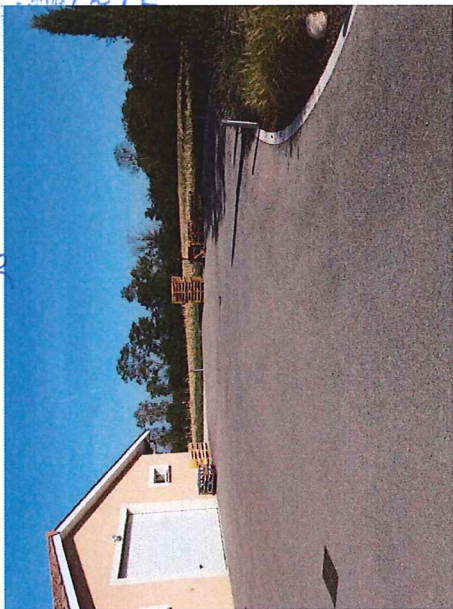
88

86



99

86



96

95

86



93

92

86



106



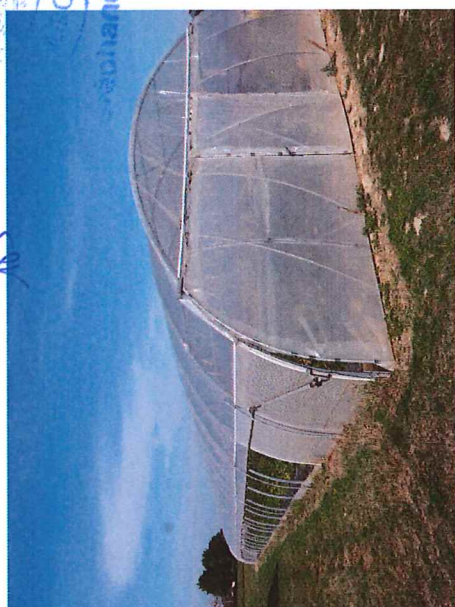
103



100



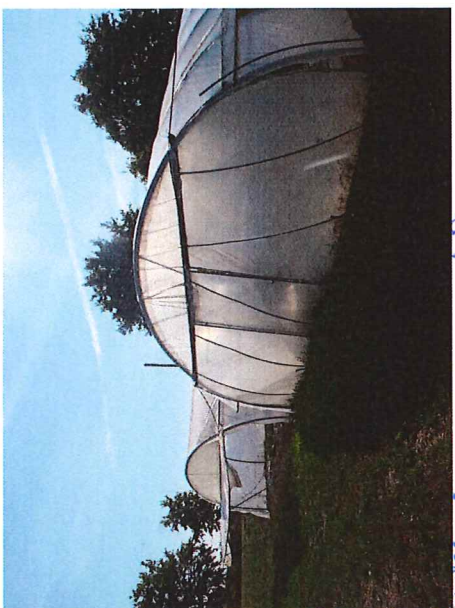
107



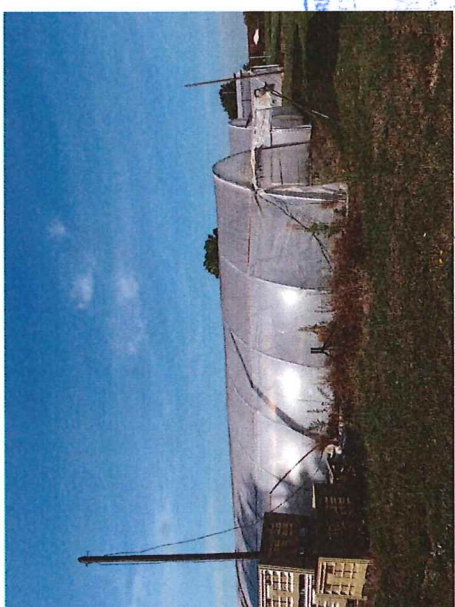
104



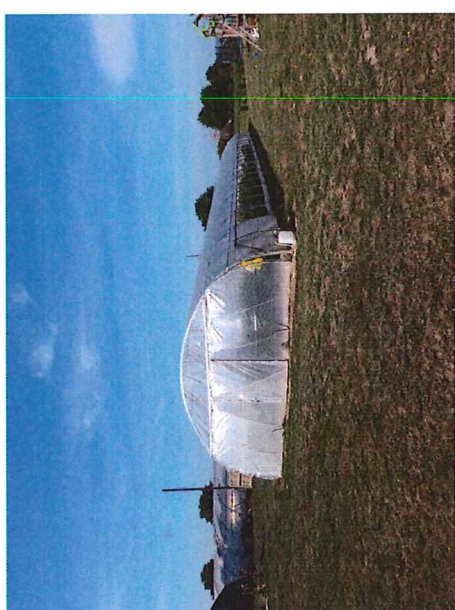
102



108



105



101



M6



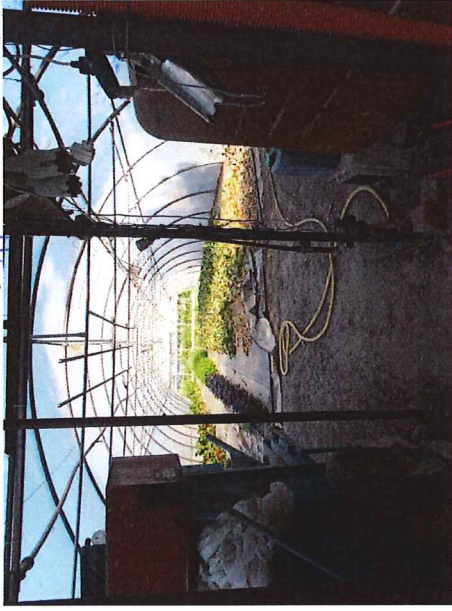
M6



M5



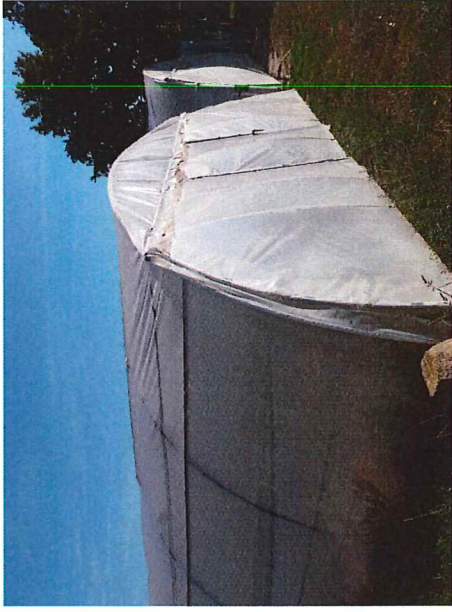
M5



M5



M2



M6



M6



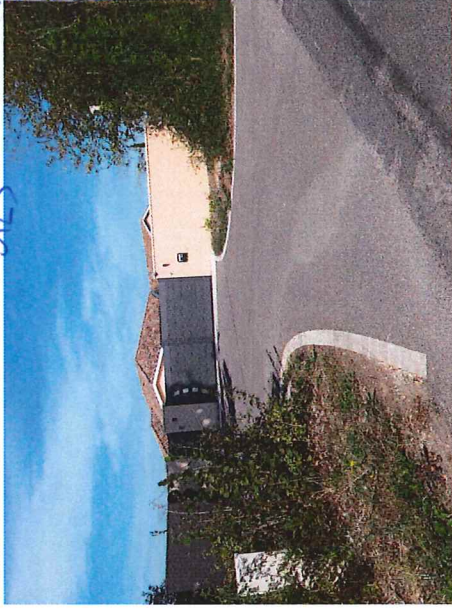
M6



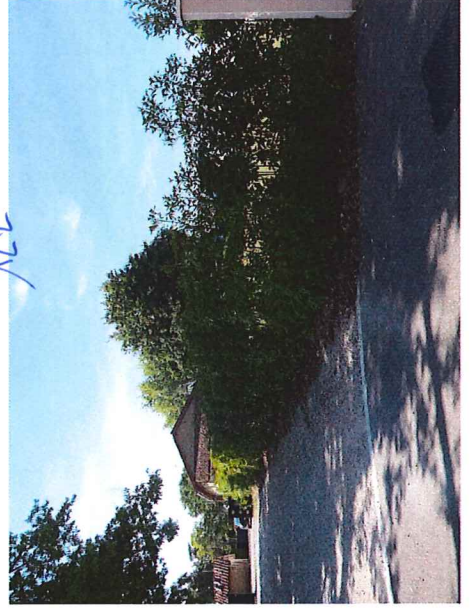
ne THESE



123



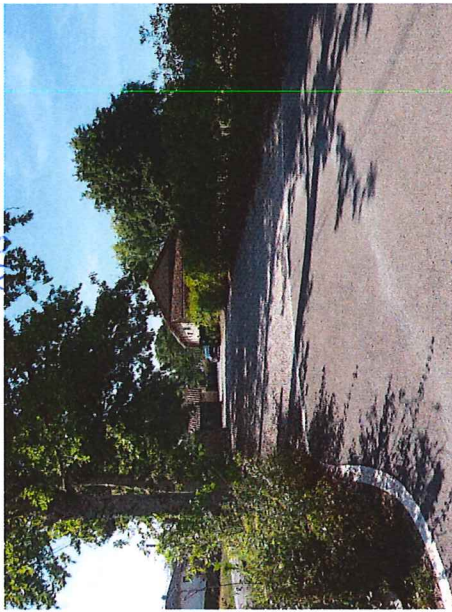
122



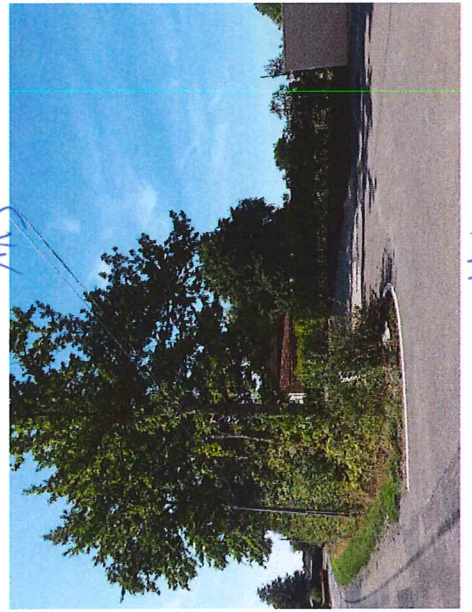
121



120



119



118